



*End of your search for a good business place...*

### ***The only commercially approved project***

Jaipur was founded by Sawai Jaisingh in the year 1727 and was the first planned city of India where planning and architecture is a tradition. To continue, and honor the ancient Tradition, 'Anukampa Group' presents new venture "**Brij Anukampa**" the only approved **commercial** complex at Ashok Marg, C-Scheme.

### ***The new Epicenter of Consumerism***

The new millennium consumer is a different breed. When shopping, he looks for an experience that goes beyond an experience that lets him express himself. He wants the comfort of space, freedom of choice. He wants to make a fashion statement. He has experienced world-class malls and totally at home with global brands He wants shopping to become less time consuming and less exhaustive with ample parking facility. Shopping foods and entertainment should be all under one roof for him the concept of leisure within a limited time holds grate attraction

**Brij Anukampa** has been designed for this global consumer and Anukampa Group, is now looking for partners in retail and leisure business who understand the value of a world class environment for their brands at a location that promises alarge and ever-growing community of such global consumers.

### ***World-Class Design***

**Brij Anukampa** has been designed by the renowned architectural firm, Maithel & Associates Brij Anukampa is a prime example of superior design and efficent space planning. The stunning extra large frontage and the steel and glass facade will not only ensure the Brij Anukampa become a distinctive landmark for the entire region but it will also create high visibility of showrooms, a critical factor in





determining the success of a complex. Special attention has been paid to internal circulation areas to allow access and visibility for all shops that will consequently ensure a high pedestrian flow.

#### **Location**

A location that probably one of the finest and most strategic right in the heart of Pink City adjoining the high profile area on main (proposed) 84 feet Ashok marg, that is heart line of city, which means your retail operations will attract not just big spenders from the Jaipur city, but also from the entire World.

#### **A World-Class Shopping & Leisure Environment**

Spacious lifts will transport shoppers to three floors of a truly global shopping area with Piped Music, Enticing shop displays. The best brands. And after they indulge themselves, they can catch their breath at special areas designed as rest zones and Health Club. Or if they are hungry, they can tickle their palates at a host of speciality restaurants that will dot the Brij Anukampa.

#### **A revolutionary Design Plus Offer Customize Your Space**

Brij Anukampa offers you a great new convenience. The option to get your showroom, restaurant or leisure area custom-designed to suit your specific requirement. What this means is that once the superstructure is ready, you have everything in place to get started. So, you can eliminate expensive modification and cut down on start-up time.

**Brij Anukampa** has created several flexible size options with the additional ability to combine floors and create large, multi-level departmental stores multi-speciality restaurants, banks, corporate office etc.

## UPPER BASEMENT FLOOR PLAN

### VALUE ADDED DESIGN

Common Circulation area  
Ample parking space at ground floor and lower basement

### Walls

Combination of Marble/Granite and Plastic Emulsion paint

### Vertical circulation

Two Automatic advance technology Lifts for all levels

### Exterior

Combination of granite and/or curtain wall Exterior paint/show windows

### Flooring

Combination of Marble and/or granite

### Toilets/facilities

Ceramic tiles on floors and walls

### Shop front

Glazed with Aluminum Framing

### Power

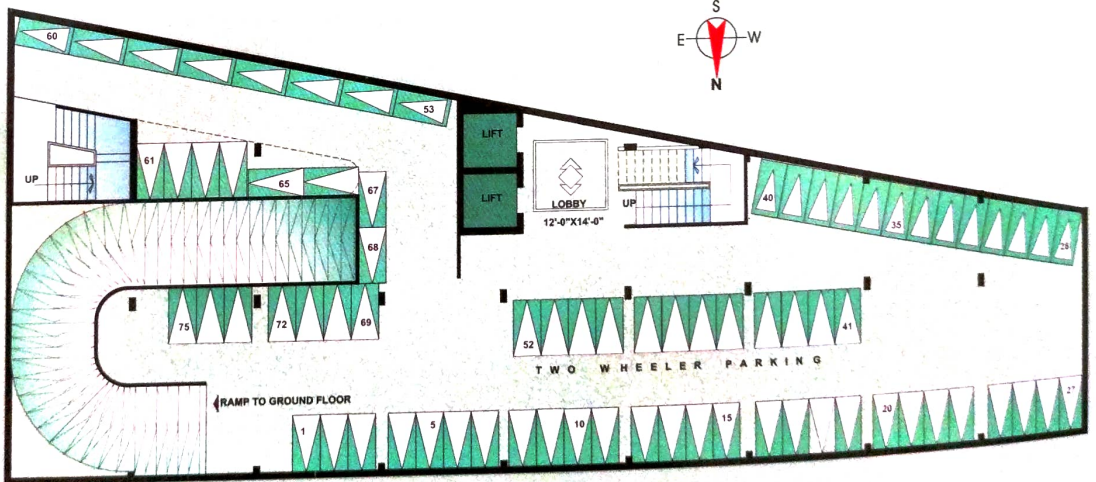
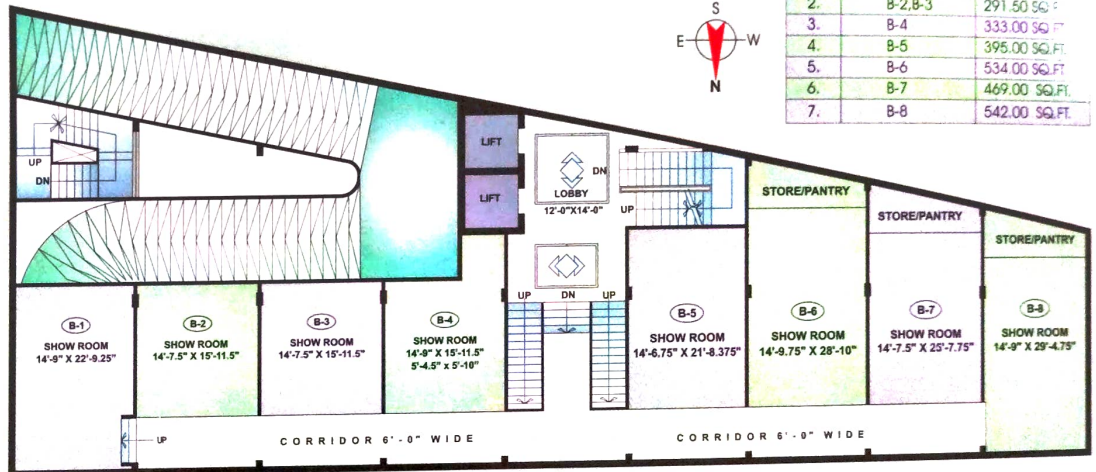
100% Power backup by Gen-sets for common areas and facilities

### PROFIT FROM OUR EXPERIENCE

The Anukampa Group boasts of a host of many reputed clients like Shankaram Jewellers, Mehfil Multicusine

Restaurant, Corporation Bank, State bank of India, Amadeus & Siyaram's Exclusive showroom, Sterling Urban Co-operative bank, Bank of Tranvocore, Arena multimedia, Bharat Low House, Kaveri Consultant, T. K. Films, Lasic Eye center, B. Khosla & Co.,...to name a

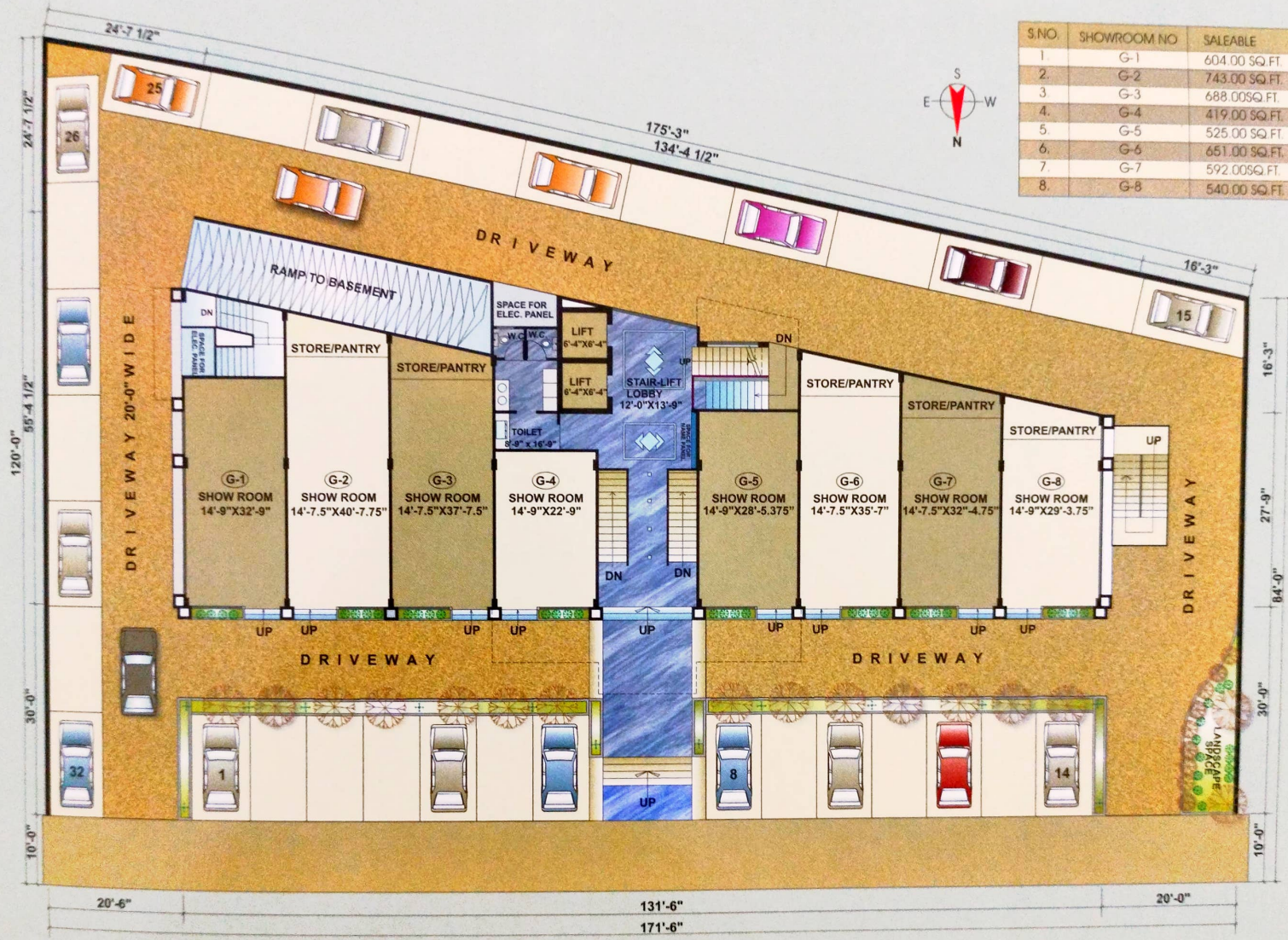
S.NO.	SHOWROOM NO	SALEABLE
1.	B-1	420.00 SQ.FT
2.	B-2,B-3	291.50 SQ.FT
3.	B-4	333.00 SQ.FT
4.	B-5	395.00 SQ.FT
5.	B-6	534.00 SQ.FT
6.	B-7	469.00 SQ.FT
7.	B-8	542.00 SQ.FT



## LOWER BASEMENT PARKING PLAN

# GROUND FLOOR PLAN

S.NO.	SHOWROOM NO	SALEABLE
1.	G-1	604.00 SQ. FT.
2.	G-2	743.00 SQ. FT.
3.	G-3	688.00 SQ. FT.
4.	G-4	419.00 SQ. FT.
5.	G-5	525.00 SQ. FT.
6.	G-6	651.00 SQ. FT.
7.	G-7	592.00 SQ. FT.
8.	G-8	540.00 SQ. FT.



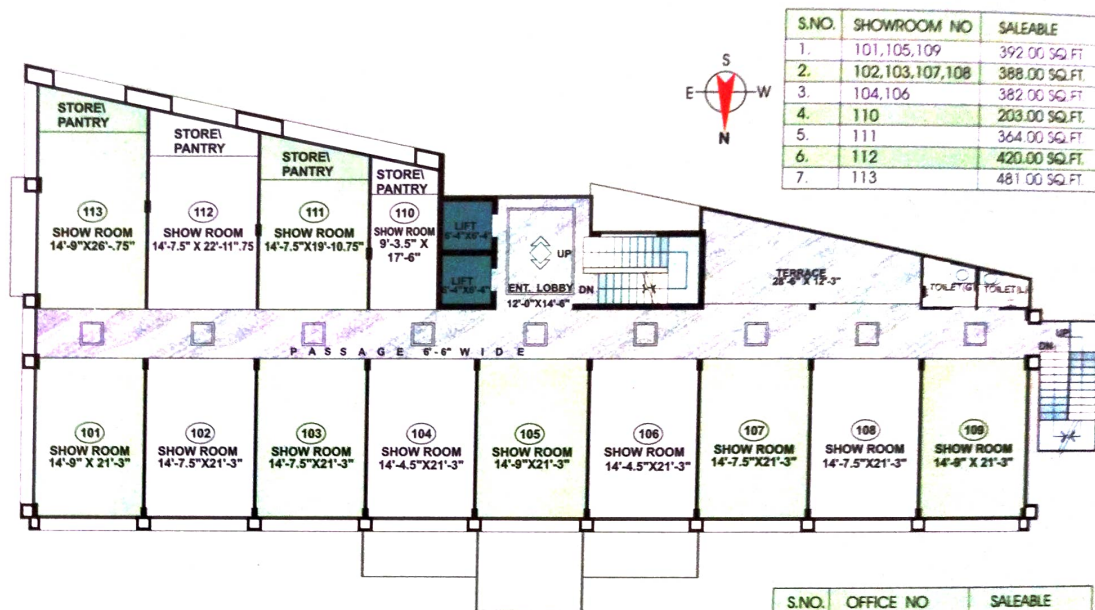
← ASHOK MARG →

## FIRST FLOOR PLAN

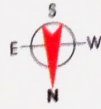
few. We invite you to be a part of this wonderful retailing and investing opportunity, With ANUKAMPA GROUP at our new venture, "Brij Anukampa". Join us today in the creation of yet another world-class landmark. Design your Own Retail Gold Mine. At Brij Anukampa.

### SPECIAL FEATURES

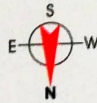
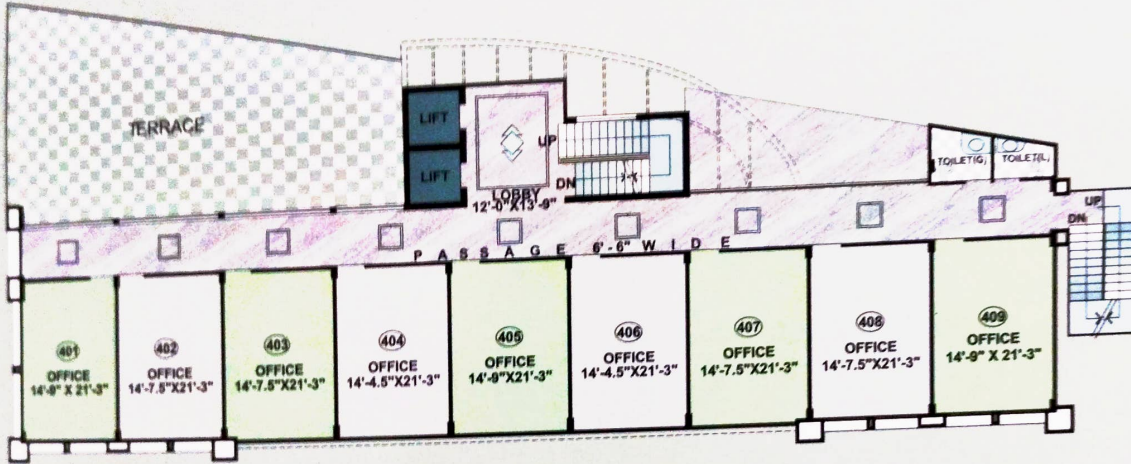
1. First Commercial Approved project on Ashok-Marg.
2. Ample Parking space on ground floor and in the basement.
3. Building facing 84ft wide (Proposed) Road.
4. Stand by power supply for lifts and Common lights.
5. Option to combine floors to create multi level showroom, Departmental, Stores, Banks, Corporate Offices, Jewellers Showrooms etc.
6. Earthquake resistant Building.
7. Extra large frontage (130 ft) steel & glass facade.
8. Finance Available by HDFC.



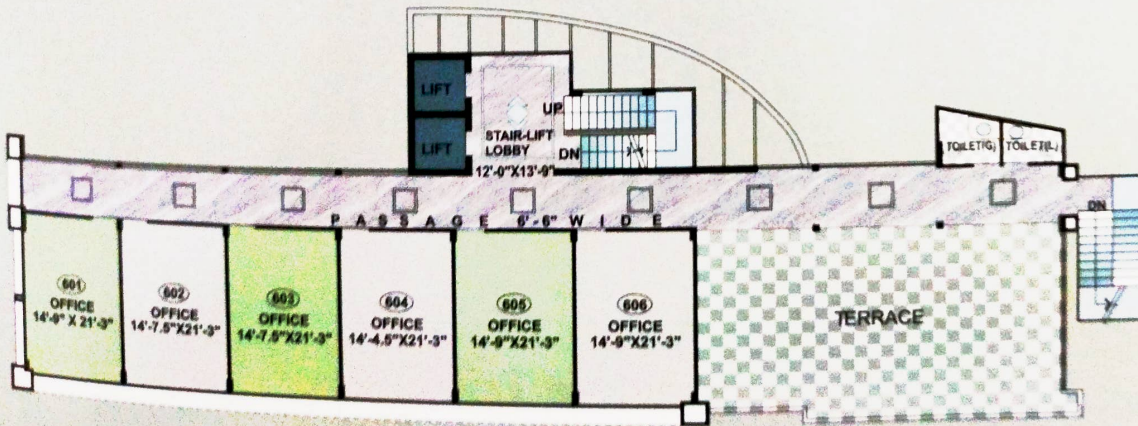
## SECOND, THIRD FLOOR PLAN



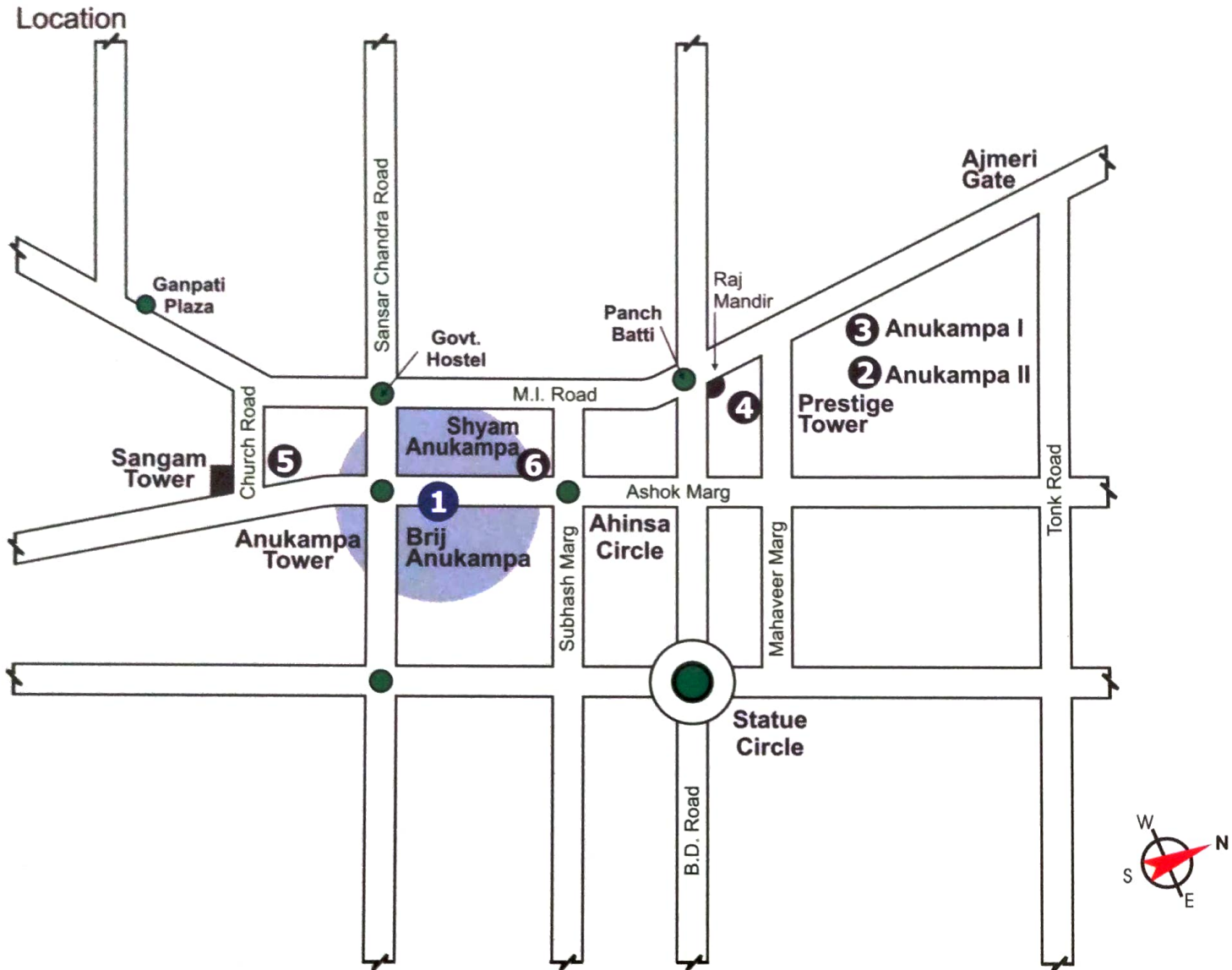
S.NO.	OFFICE NO	SALEABLE
1.	401,405,409	392.00 SQ. FT.
2.	402,403,407,408	388.00 SQ. FT.
3.	404,406	382.00 SQ. FT.



S.NO.	OFFICE NO	SALEABLE
1.	501,505,506	392.00 SQ. FT.
2.	502,503	388.00 SQ. FT.
3.	504	382.00 SQ. FT.



**FIFTH, SIXTH SEVENTH FLOOR PLAN,**



BUILDERS AND PROMOTERS

## **ANUKAMPA BUILDERS (PVT.) LTD.**

CORPORATE OFFICE

Anukampa Mansion, M.I. Road, Jaipur 302 004

Tel : 378659, 365557, 371080, 362706

*Architects*

**Maithel and Associates**

Jaipur Ph.: 743619, 741232

E-mail : maithelss@yahoo.com

*Structural Consultant*

**N.M. Roof Designers Ph.: 361224**

*Chartered Accountants*

**B. Khosla & Company Ph.: 372678**

**R.K. Malpani & Associates Ph.: 364513**

*Legal Advisers*

**R.S. Mehta & Associates Ph.: 363144**

Note : All the plans, drawings amenities etc. are subject to the approval of the respective authorities and would be changed if necessary, the discretion remains with the developers

